



EVO-1120B EVO MFG JEEP JK/JKU HiLift Jack Tailgate Mount



PART#	DESCRIPTION	QTY
EVO-12052B	HiLift Mount	1
EVO-12053B	HiLift Upper Mount Bracket	1
EVO-900342	Aluminum Knob	1
EVO-20035	HiLift Spacer JK	2
EVO-770048	Hardware Pack	1
EVO-900343	M8 1.25 50MM Zinc	2
EVO-900344	M8 Washer Zinc	2
EVO-900347	Carriage Bolt 3/8-16 1.25 Long	1
EVO-900350	3/8" Lock Washer	1
EVO-900351	3/8" Flat Washer	1
EVO-900352	Zinc Alloy Locking Wing Nut	1
EVO-900354	Zinc Platted Ribbed Neck Carriage Bolt	1
EVO-900355	Chrome Plated Unthreaded Spacer	1

NOTE: Installation of EVO HiLift Jack Tailgate Mount in Combination with EVO Tire Carrier will slightly limit the rear door from fully opening. Jack must be in full down position to clear tail light when tailgate door is opened. Recommended for 48" or smaller jacks, top of jack will protrude above roof line. Jack handle keepers are recommended; jacks are inherently loose and rattle. Use of zip ties and/or bungee cords to tension the jack and handle will help to quite them down.

1. Remove factory rear tailgate plastic hinge bracket covers. Note that the top and bottom covers are slightly different in length.
2. Leaving the tailgate shut remove the two factory hinge bracket bolts on the tailgate that are closest to the right seam of the tailgate.



3. Next measure 6 7/8" from the side that was closest to the spare tire mount and mark the center point on the OE plastic hinge bracket covers as shown in photo. Note that one of the plastic hinge bracket covers is slightly longer than the other, still measure both to the recommended 6 7/8".



4. Drill each of the OE plastic hinge bracket covers with a 5/8" drill bit or larger on your previously marked 6 7/8" measurement. Note that these holes can be made in various ways but drilling is the simplest method.

5. Re Install factory plastic hinge bracket covers. Top and bottom covers are unique.



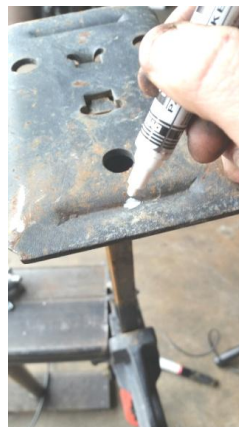
6. Insert one of the supplied spacers into each of the previously drilled holes in the OE plastic hinge bracket covers.
7. Using the 2 supplied M8 1.25 50mm bolts and washers install the EVO MFG HiLift Jack Tailgate Mount to the tailgate.



8. Using the supplied hardware bag install the EVO HiLift Upper Mount Bracket in the two left side holes as shown in the photos. Note do not tighten these bolts completely. You will tighten these down securely in step 11.



9. EVO MFG recommends drilling a 1/4" hole in the foot of your jack as shown in the photo. This hole will allow you to secure your jack with the supplied square neck carriage bolt and wing nut.



10. Install your HiLift Jack into the EVO MFG HiLift Jack Tailgate Mount.
11. Using the supplied carriage bolt, lock washer, flat washer, chrome spacer, and aluminum knob secure your HiLift Jack to the EVO MFG HiLift Jack Upper Mount Bracket.
12. Once your HiLift Jack has been secured to the EVO MFG HiLift Jack Upper Mount Bracket you can tighten down the two Upper Mount Brackets to the EVO MFG HiLift Jack Tailgate Mount.

PERIODICALLY CHECK TIGHTNESS OF ALUMINUM KNOB.